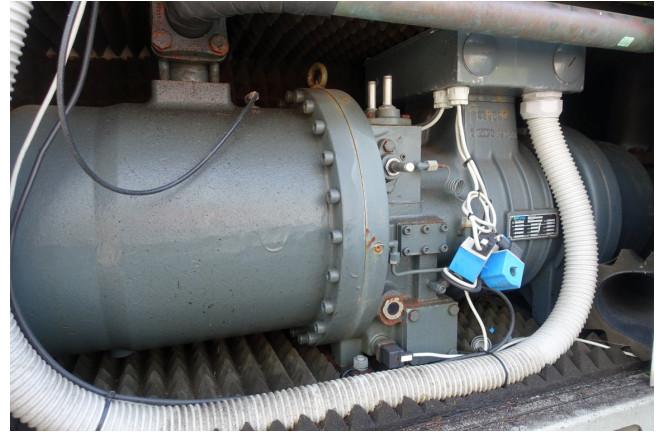


Refcomp SRC S 253 L4

Specifications

Hersteller	Refcomp
Typ	SRC S 253 L4
Kältemittel	Freon
Refrigerant type	R407 C or other types
kW at 0°C/+40°C	210
kW at -5°C/+40°C	170.8
kW at -10°C/+40°C	136.4
Ölabscheider	✓
Schauglass	✓
Bemerkungen	*Capacity based on +2°C/+40°C // y.o.b. 2002 // 286 m ³ /h
Gewicht in kg.	615
Größe	1500x640x700 mm (LxWxH)
Stock	1



Description

Used Refcomp SRC S 253 L4

RefComp Kompressor SRC S 253 L4 /
Diese RefComp verwendet Kältemittel
R 407 C / kW 75/286 Vol. M³ / h

